

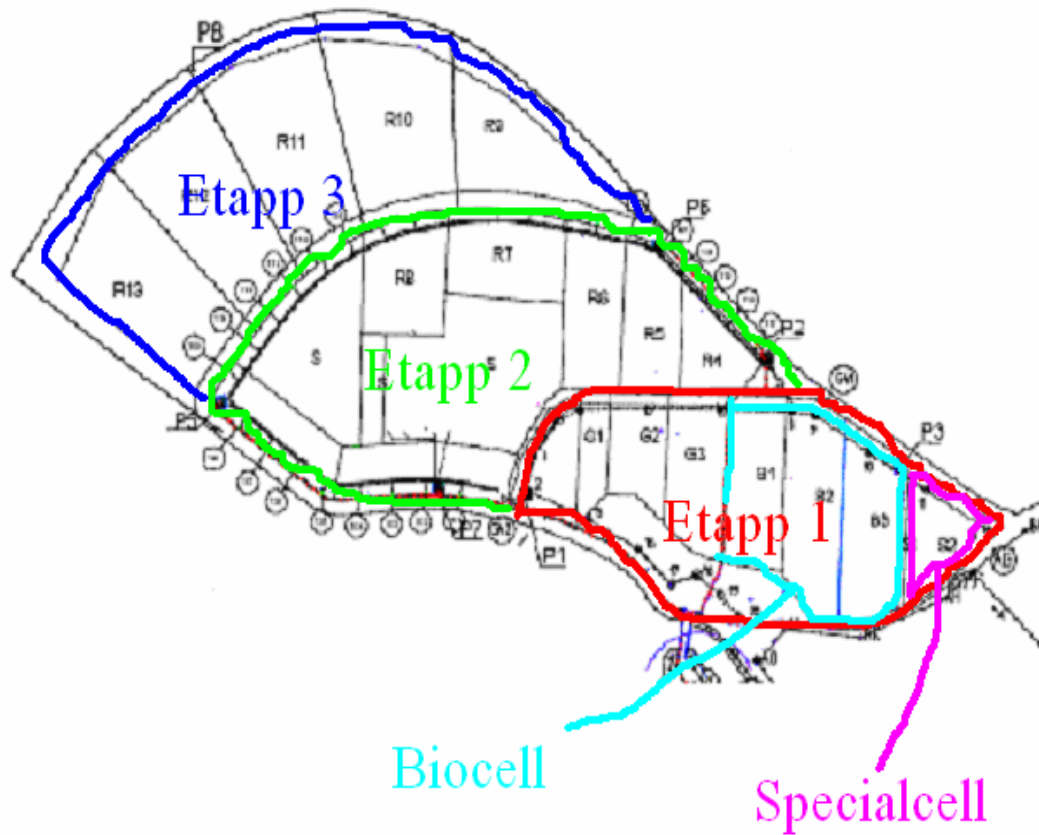
Infiltration av lakvatten från specialceller i bioceller

En effektiv metod för att förhindra spridning av metaller?

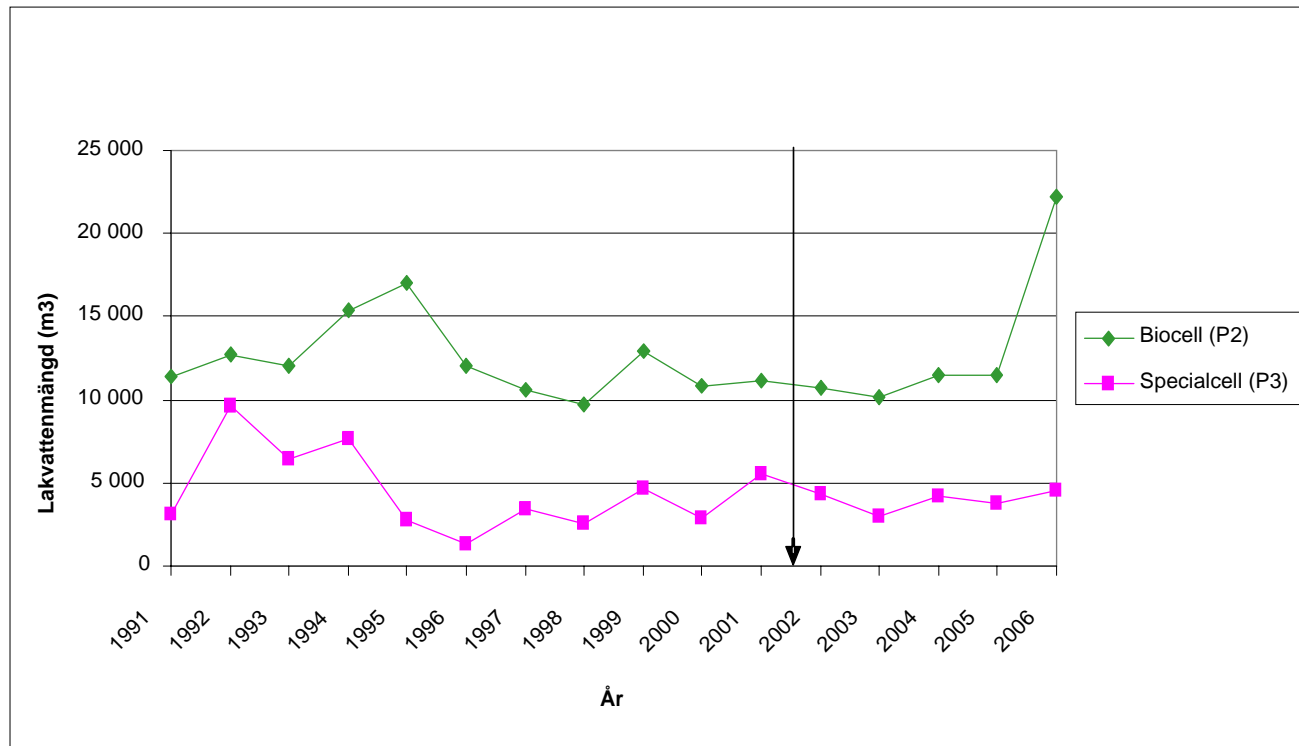
ZARA ISACSSON



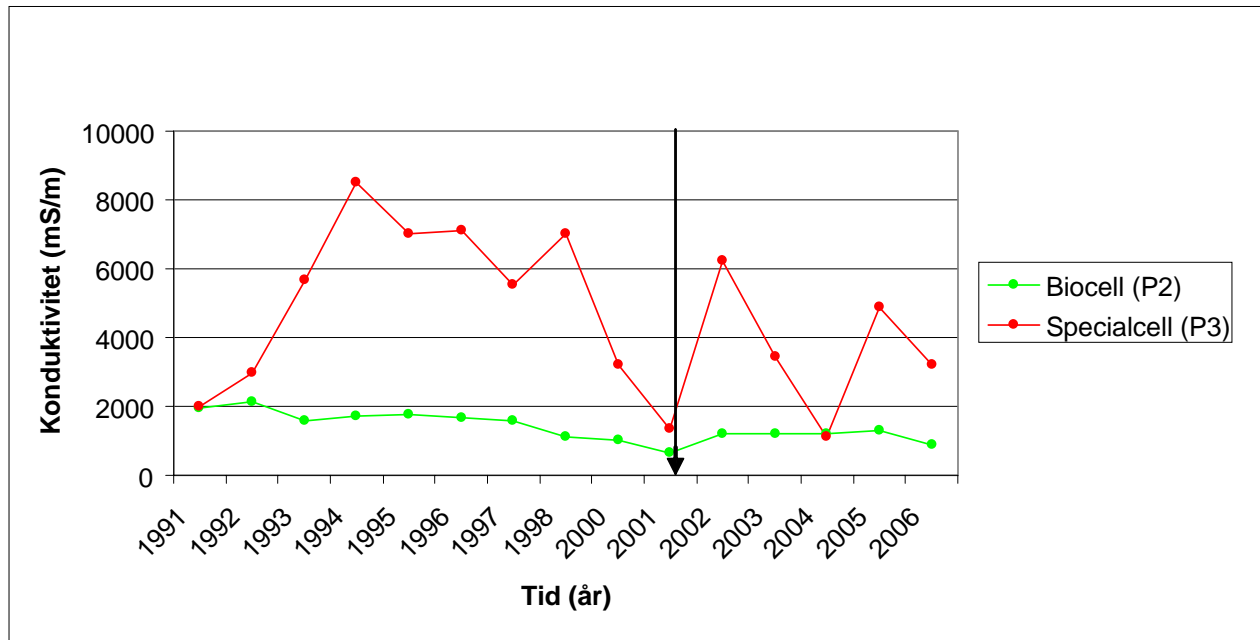
Infiltration - Karta



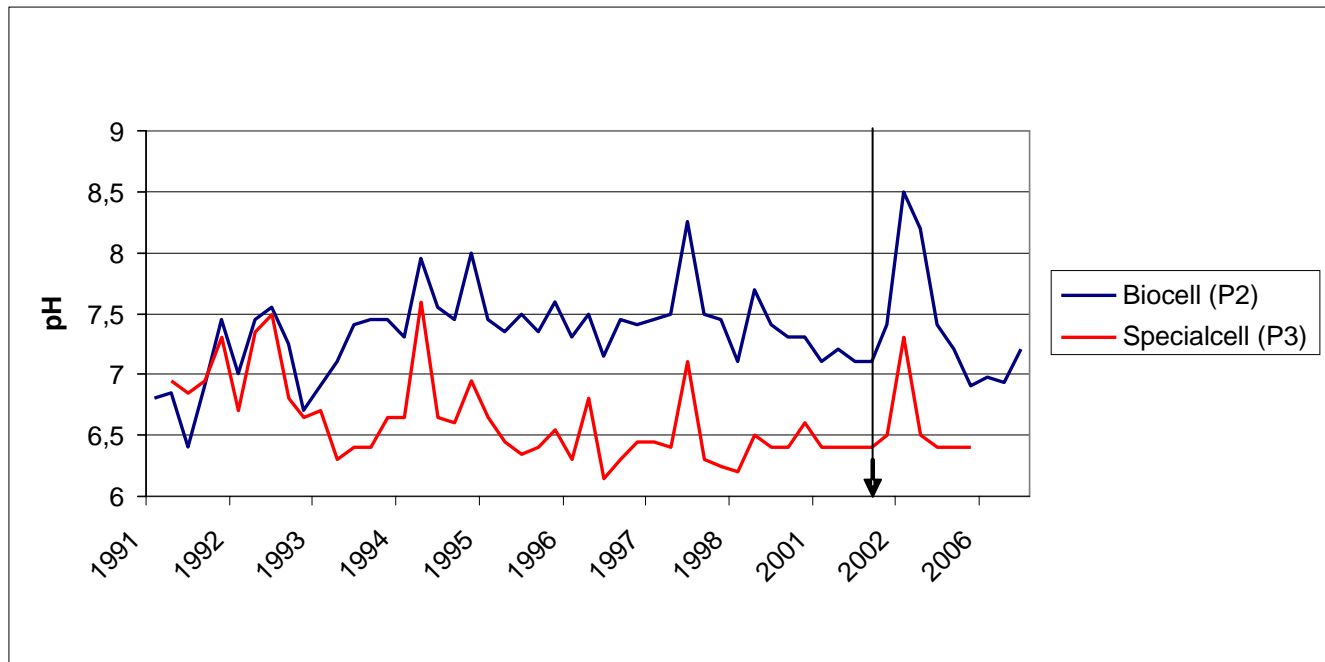
Infiltration - Volymer



Konduktivitet

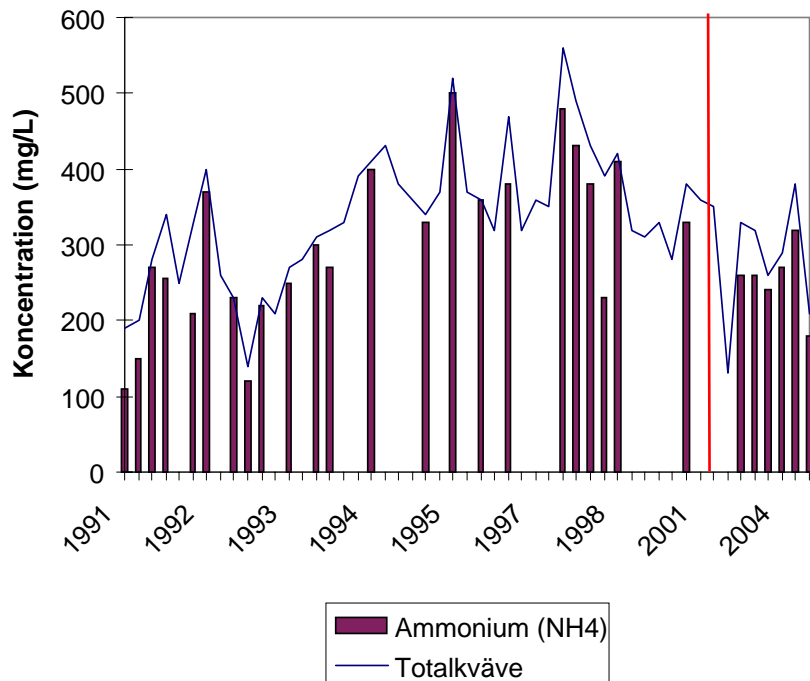


pH

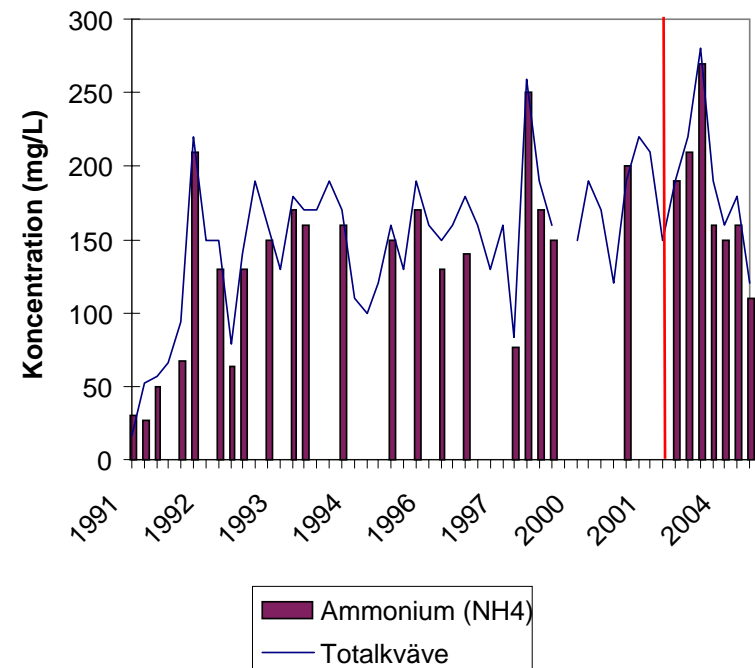


Kväve

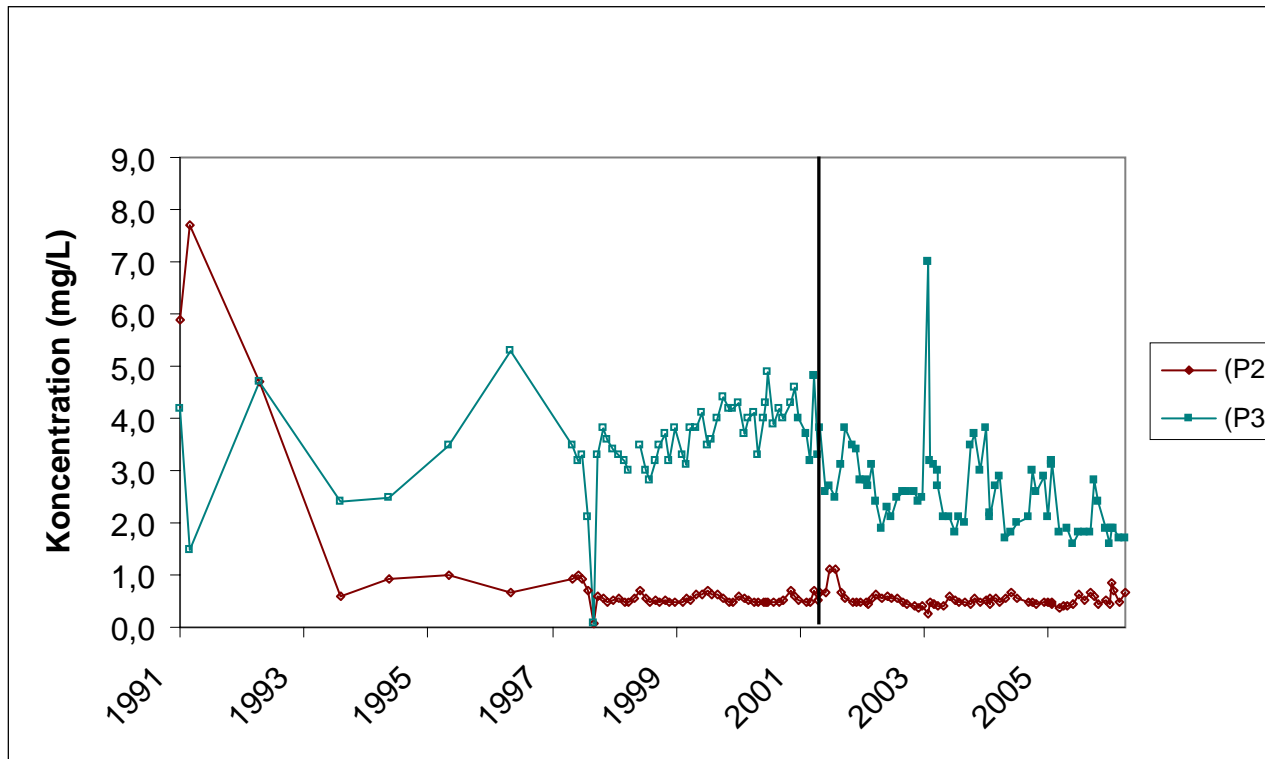
Totalkväve- och ammoniumhalter i P2 vatten



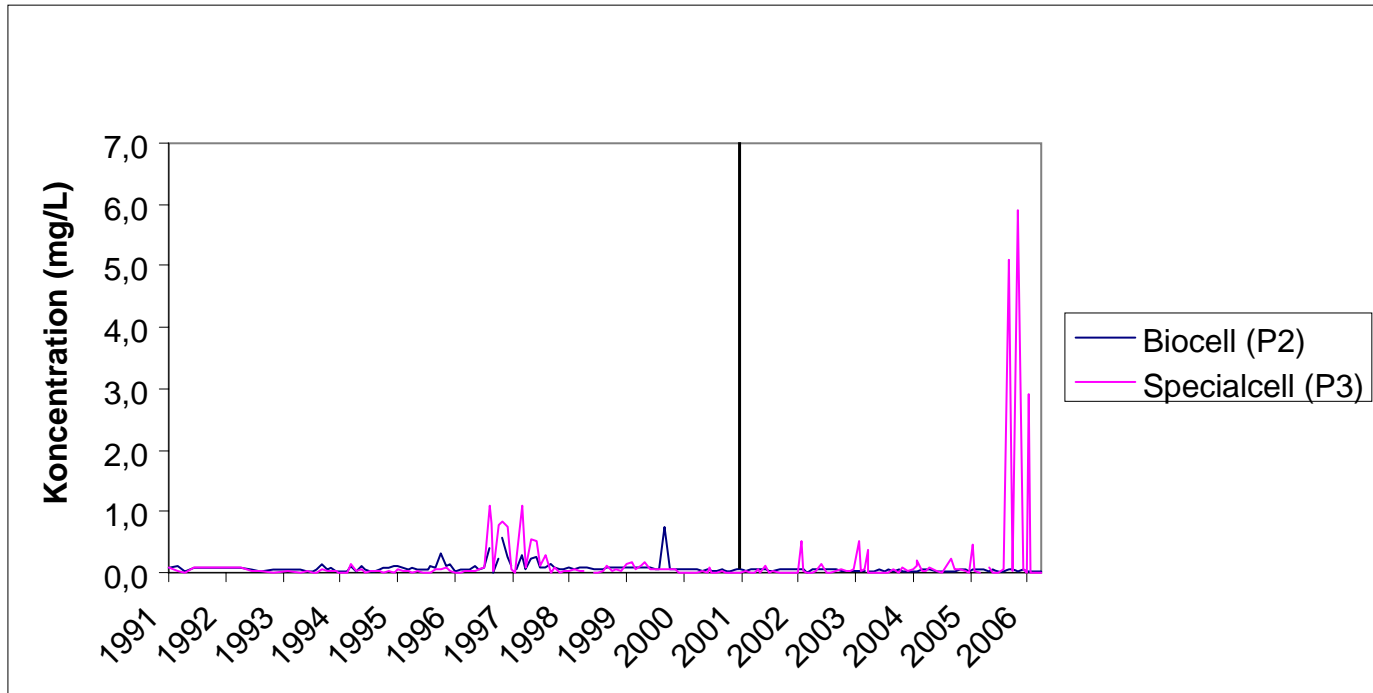
Totalkväve- och ammoniumhalter i P3 vatten



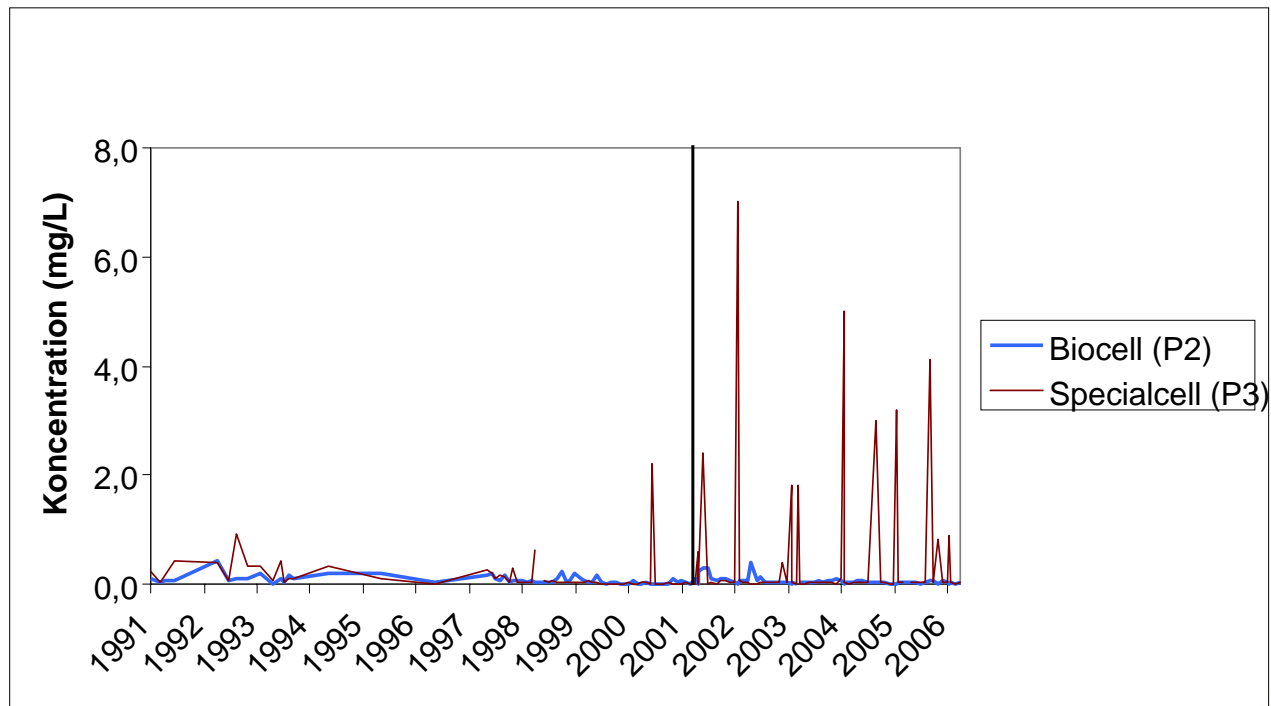
Managn



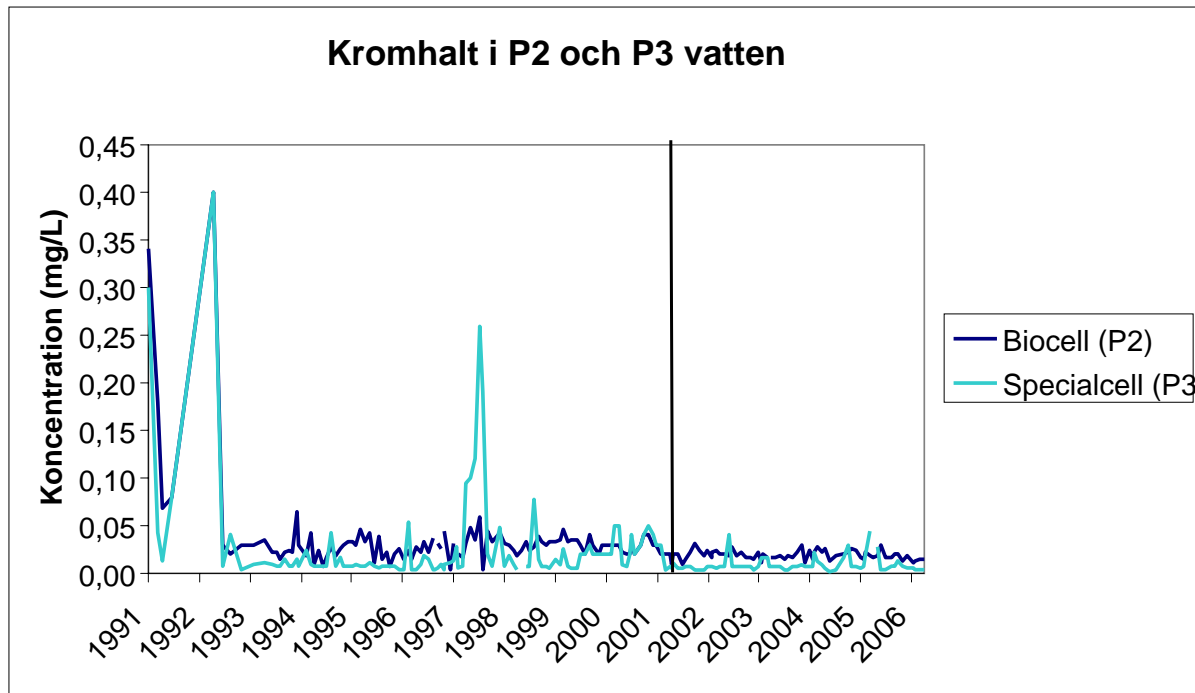
Nickel



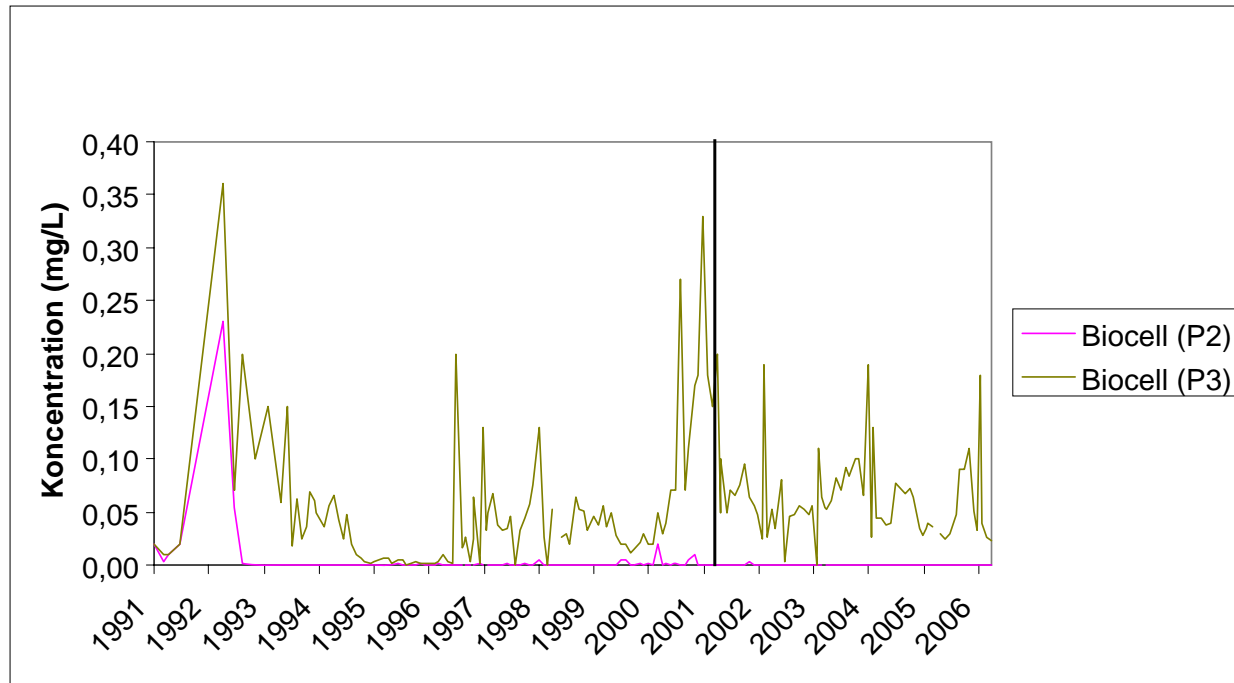
Koppar



Krom



Kadmium



Sammanfattning

- **Biocellens vatten verkar inte påverkas**
- **Alla studerade metaller retarderas**
- **Hög alkalinitet motverkar pH-sänkning**

